

Configure Cura for Geeetech Multi-color Printer

This manual shows you how to set up Cura for Multicolor printing on Geeetech A20M,(also A10M, A30M, A10T, A20T, A30T, just choose the right Configuration file on our website)

Tutorial video: <https://www.youtube.com/watch?v=JPljmHDLmow>

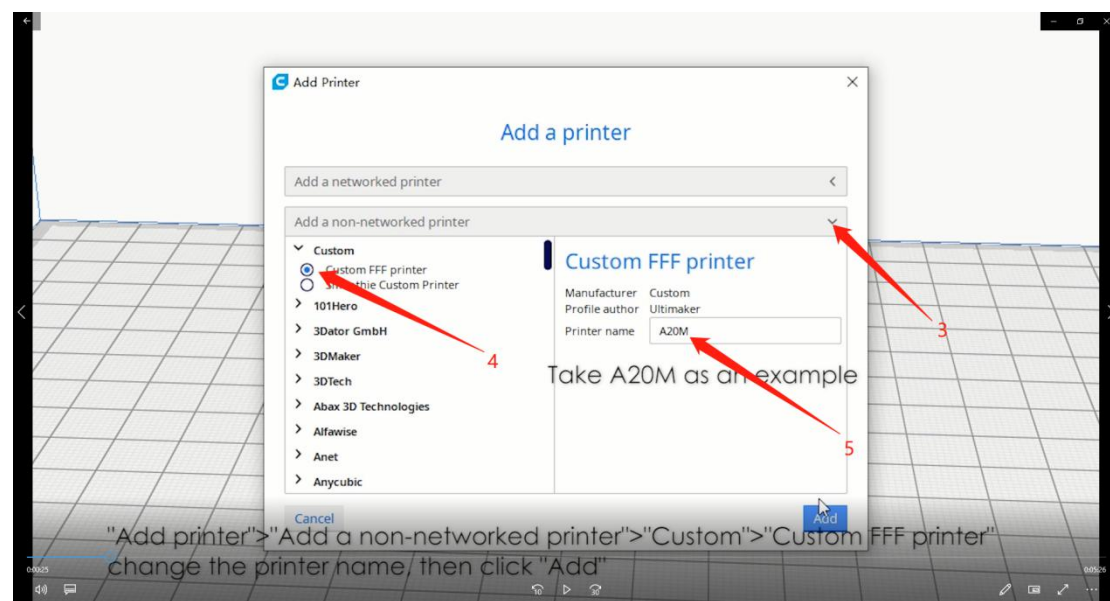
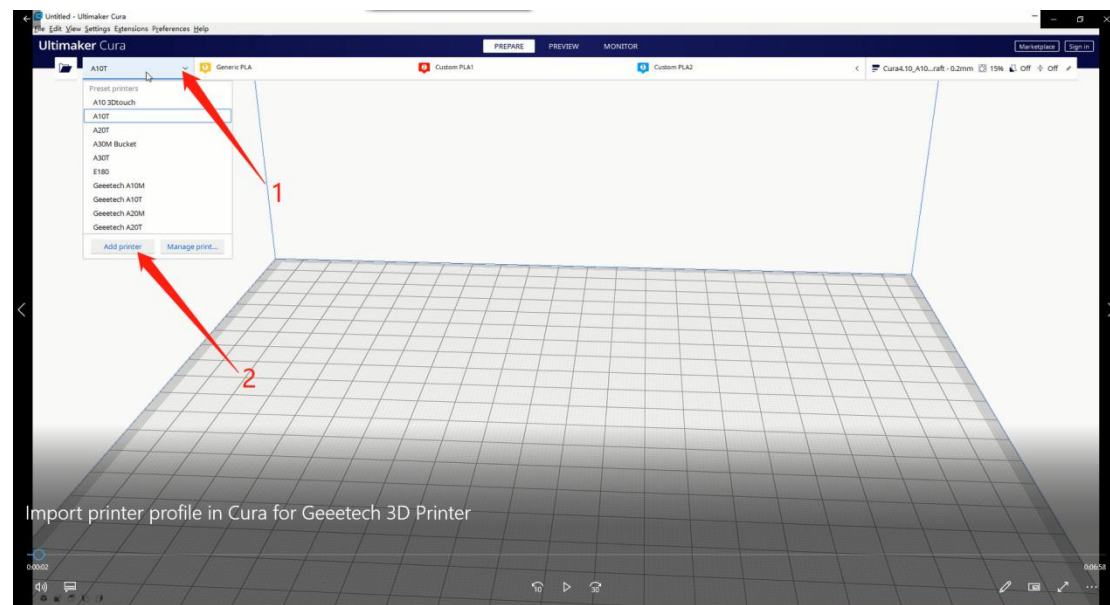
Cura Configuration files:

https://www.geeetech.com/download.html?download_id=47

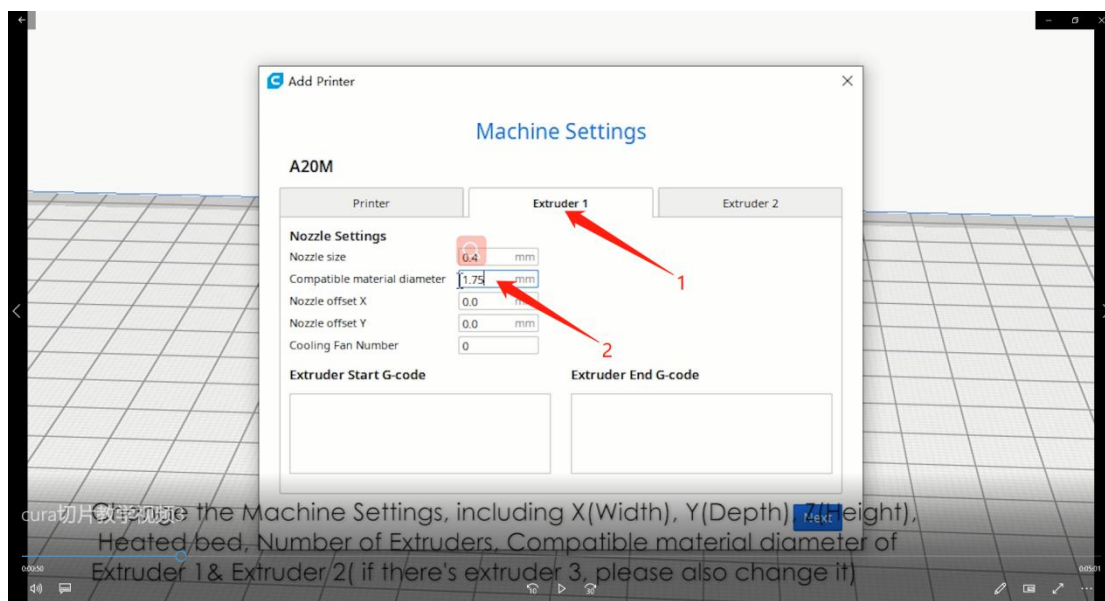
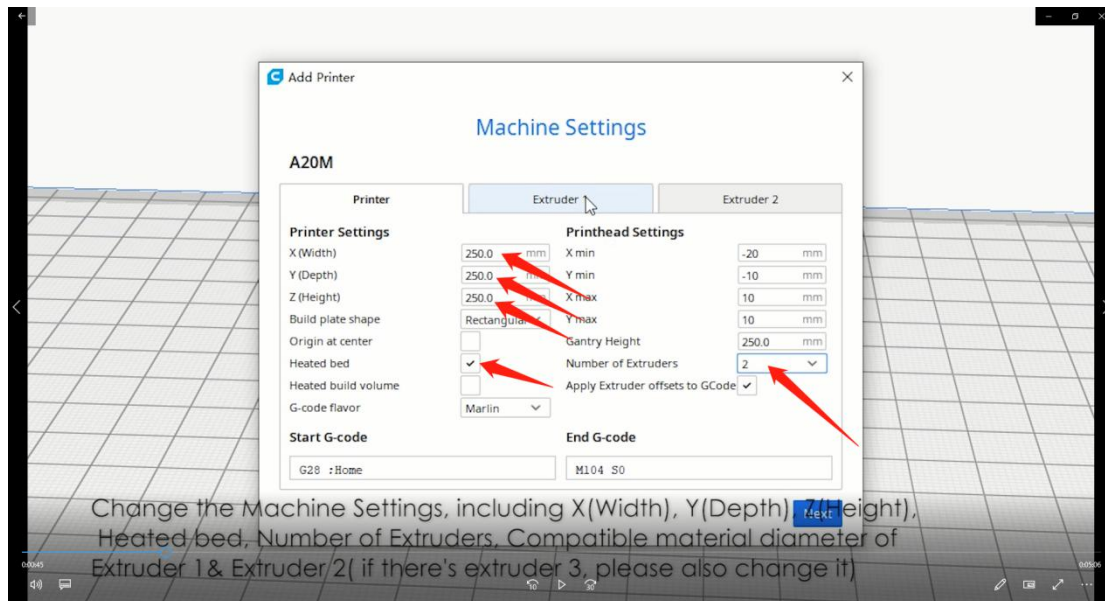
Multi-color model: <https://www.thingiverse.com/oliverking/likes>

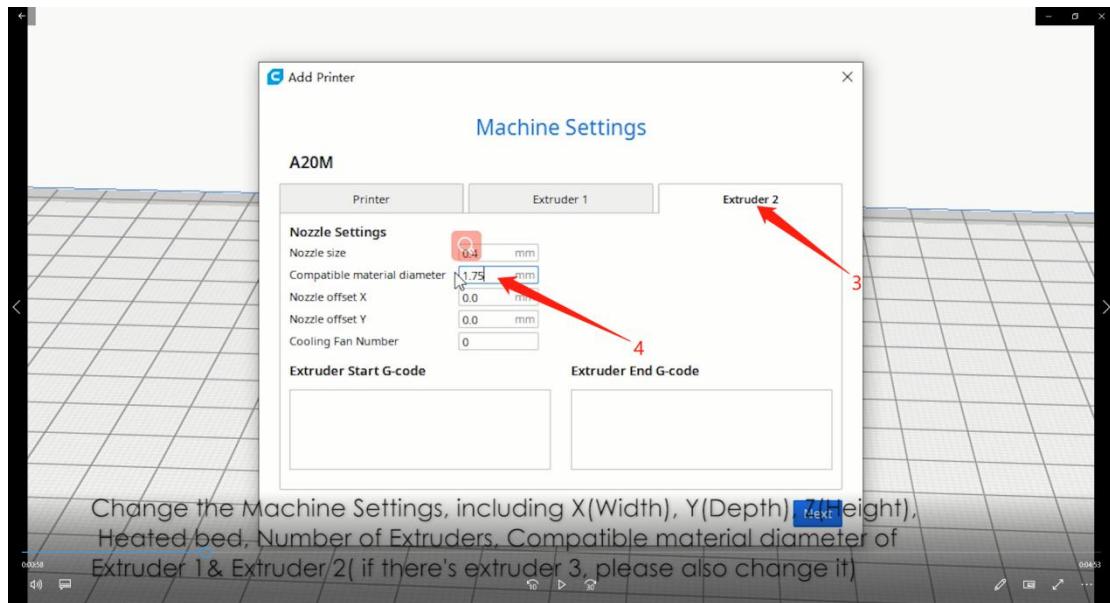
Reference video: <https://www.youtube.com/watch?v=N9x9de4nYI8&list=LL&t=0s>

1. "Add printer">"Add a non-networked printer">"Custom">"Custom FFF printer", change the printer name, then click "Add"

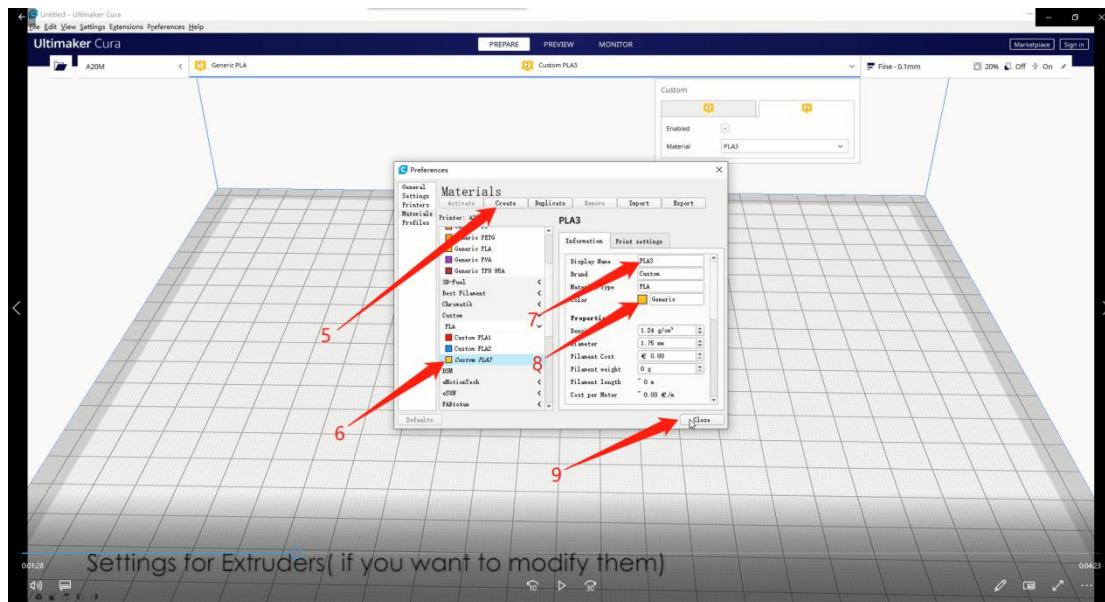
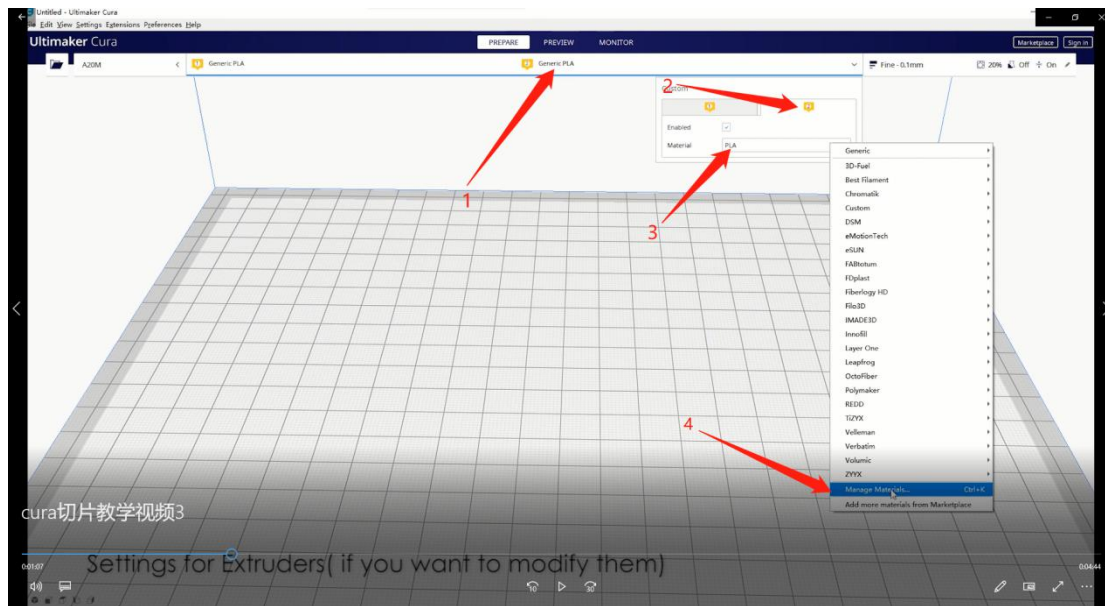


2. Change the Machine Settings, including X(Width), Y(Depth), Z(Height), Heated bed, Number of Extruders, Compatible material diameter of Extruder 1& Extruder 2(if there's Extruder 3 for A10T/A20T/A30T/, please also change it)



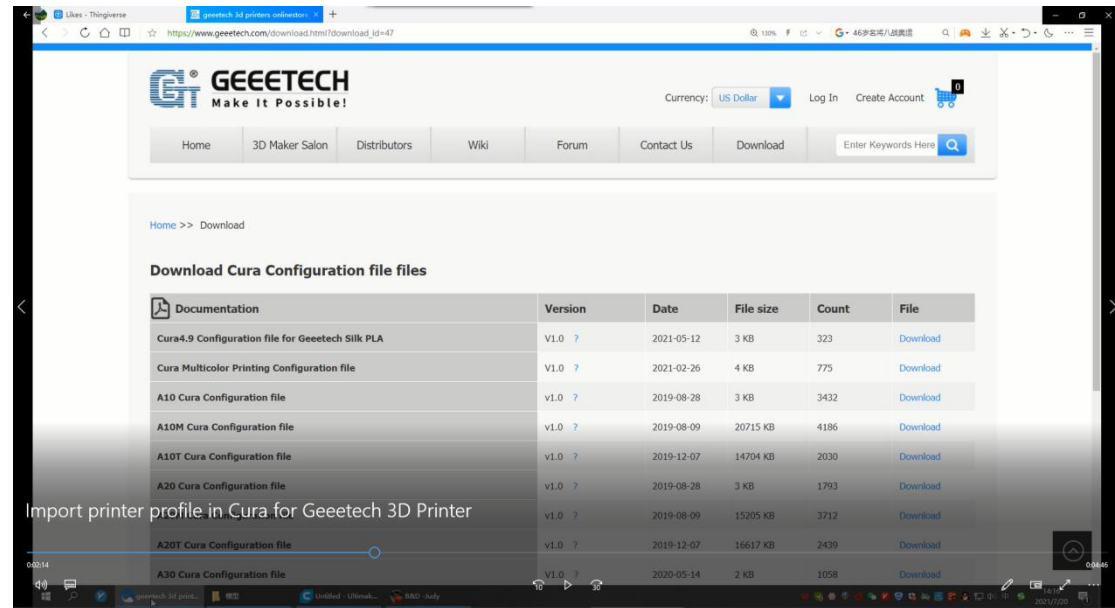


3. Settings for Extruders(if you want to modify them)

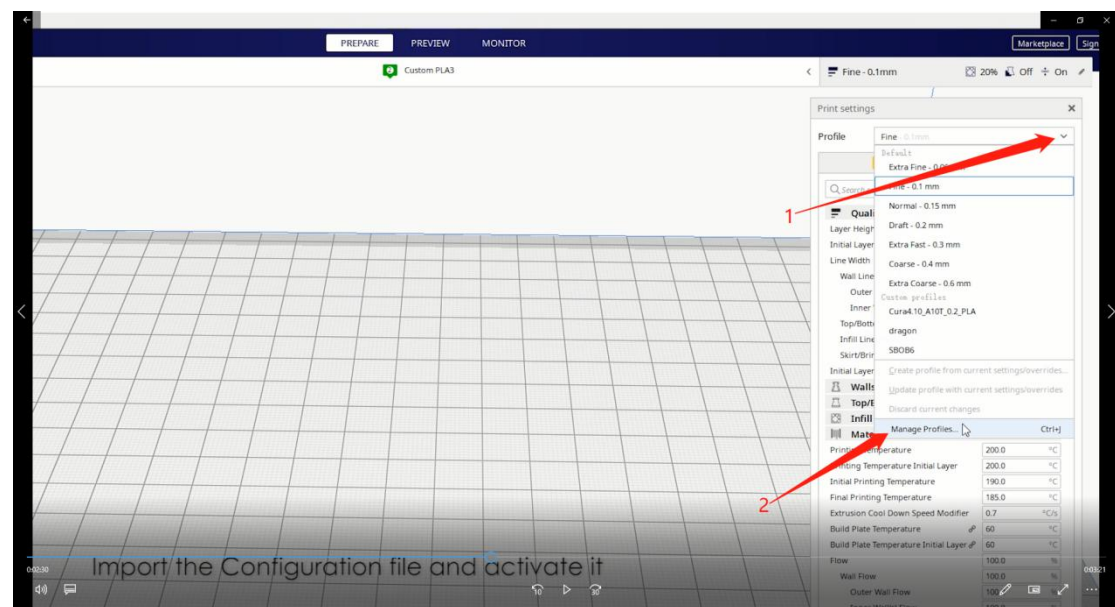


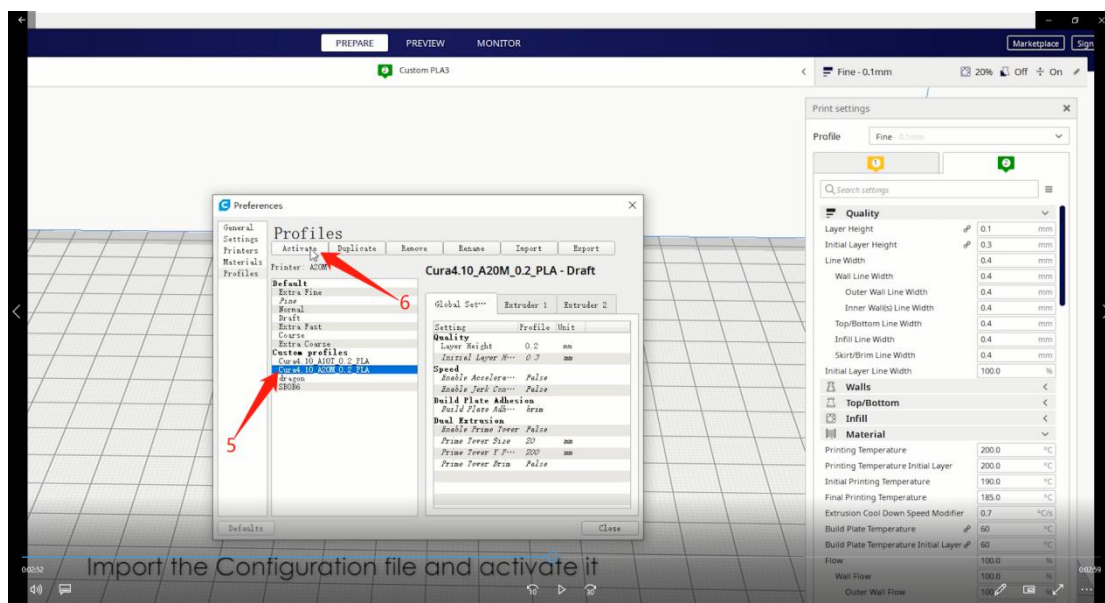
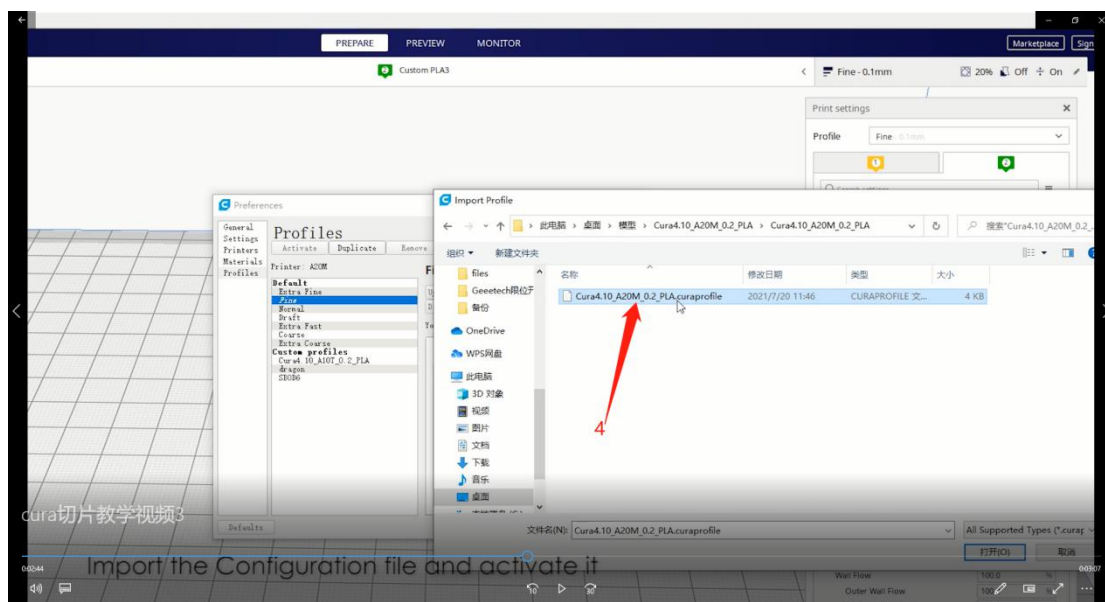
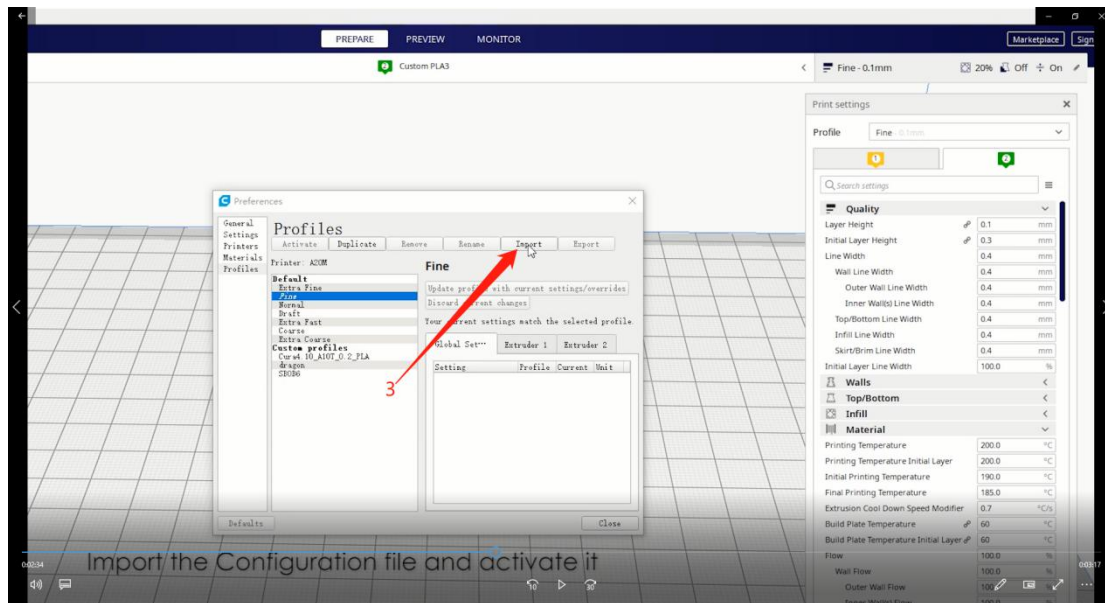
4. Download Configuration file on our official website:

https://www.geeetech.com/download.html?download_id=47

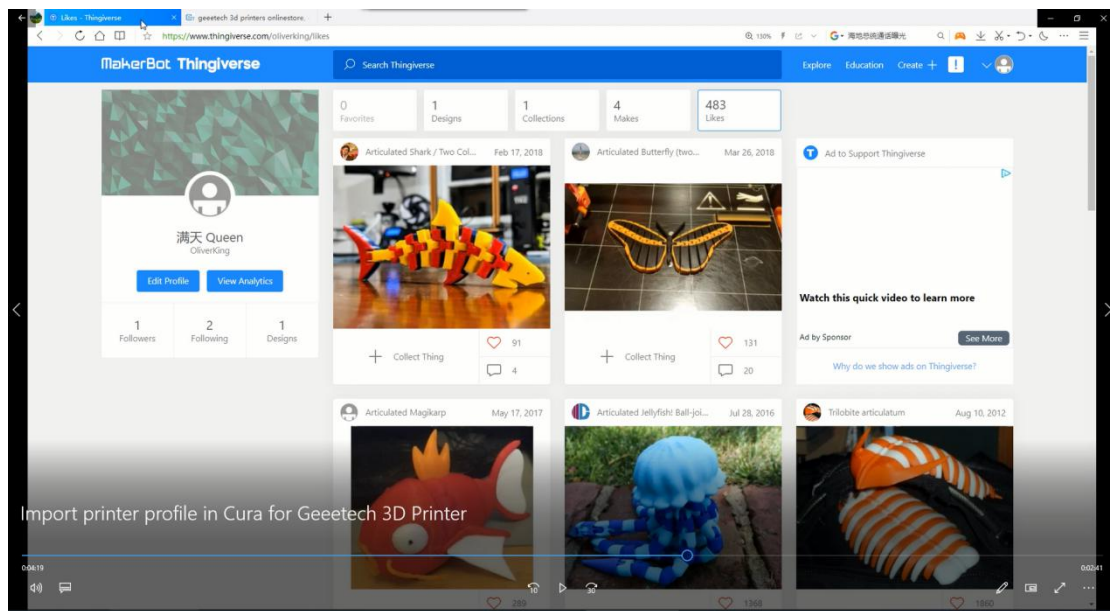


5. Import the Configuration file and activate it

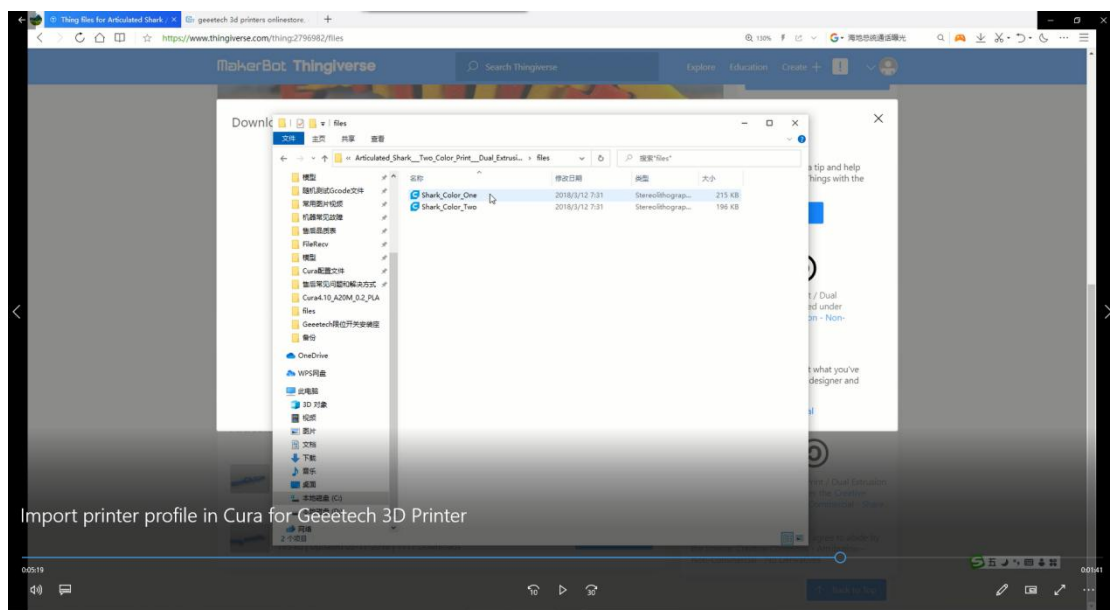




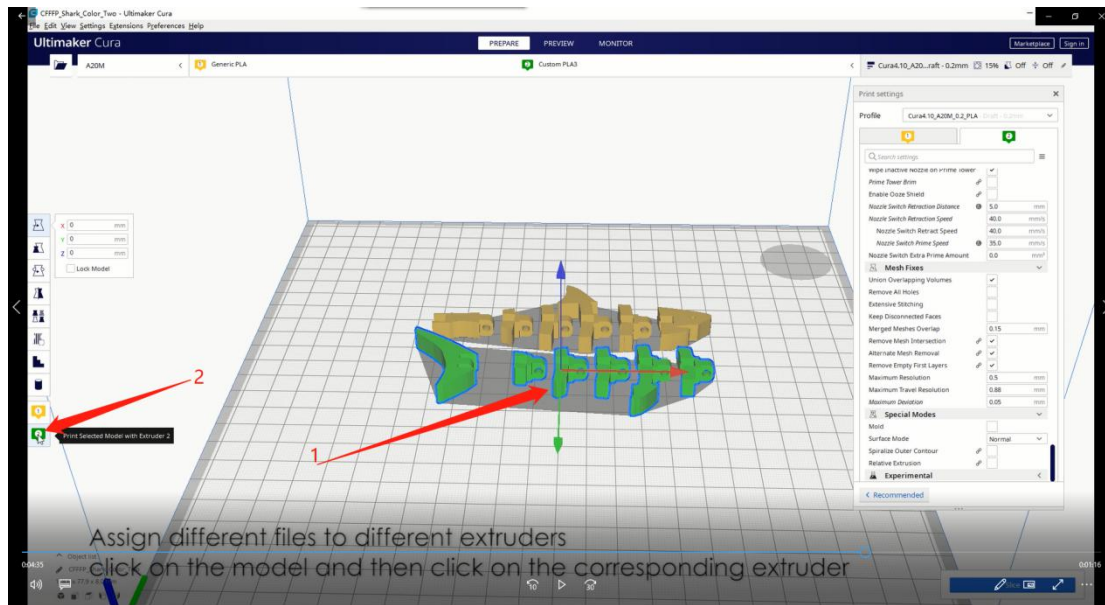
6. Find some multi-color STL files



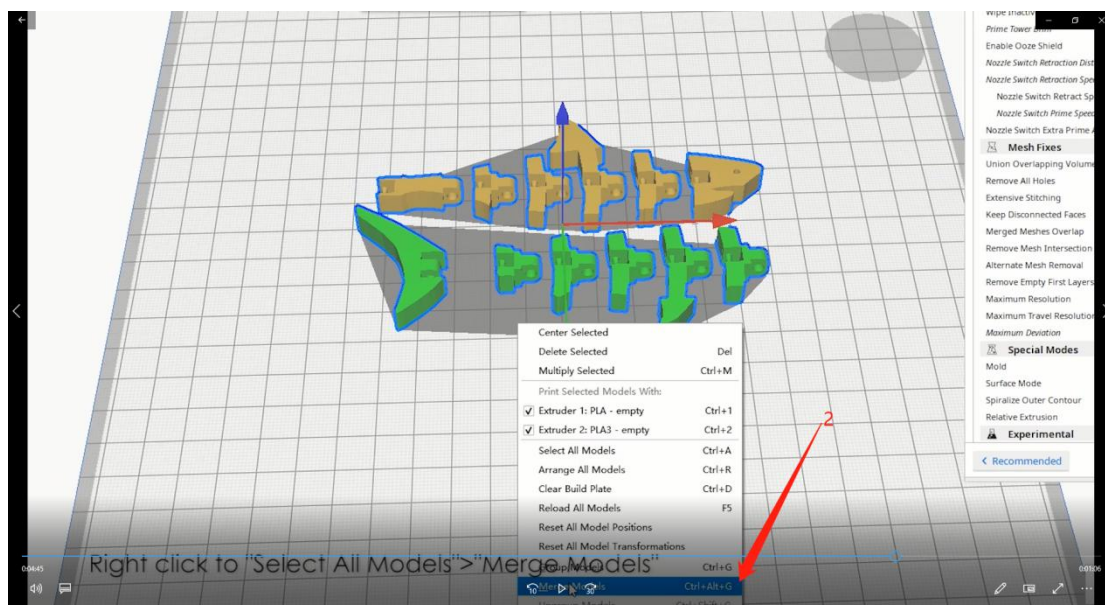
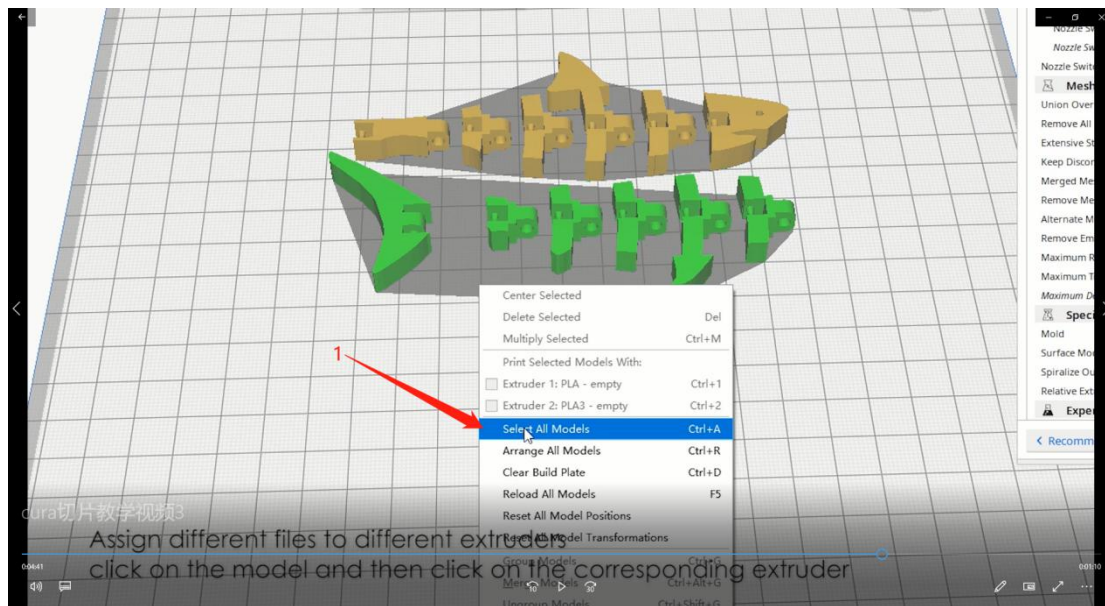
7. Put the model files in Cura



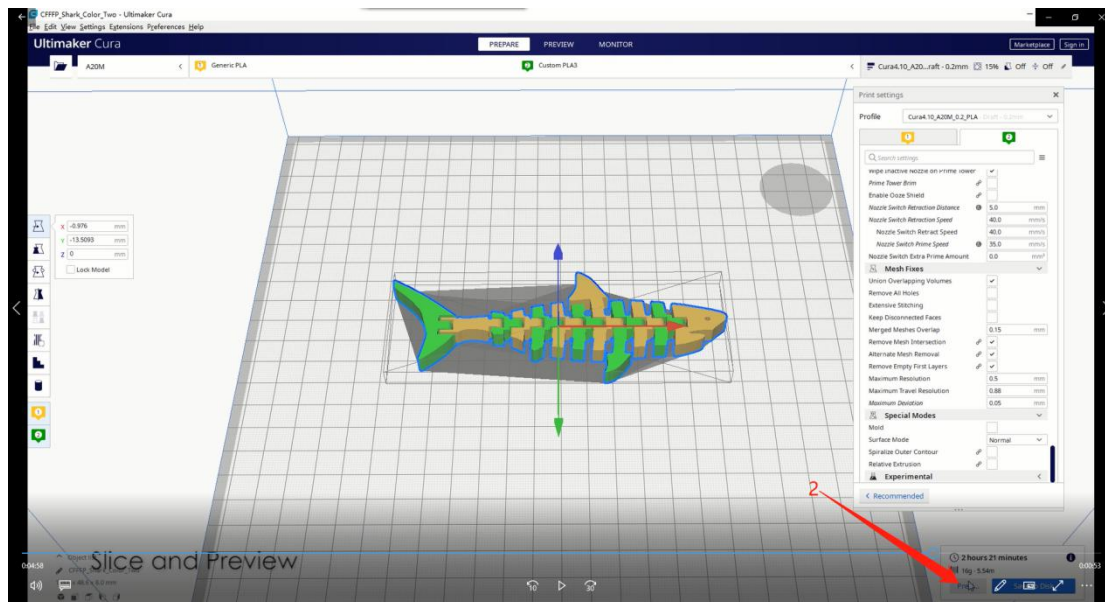
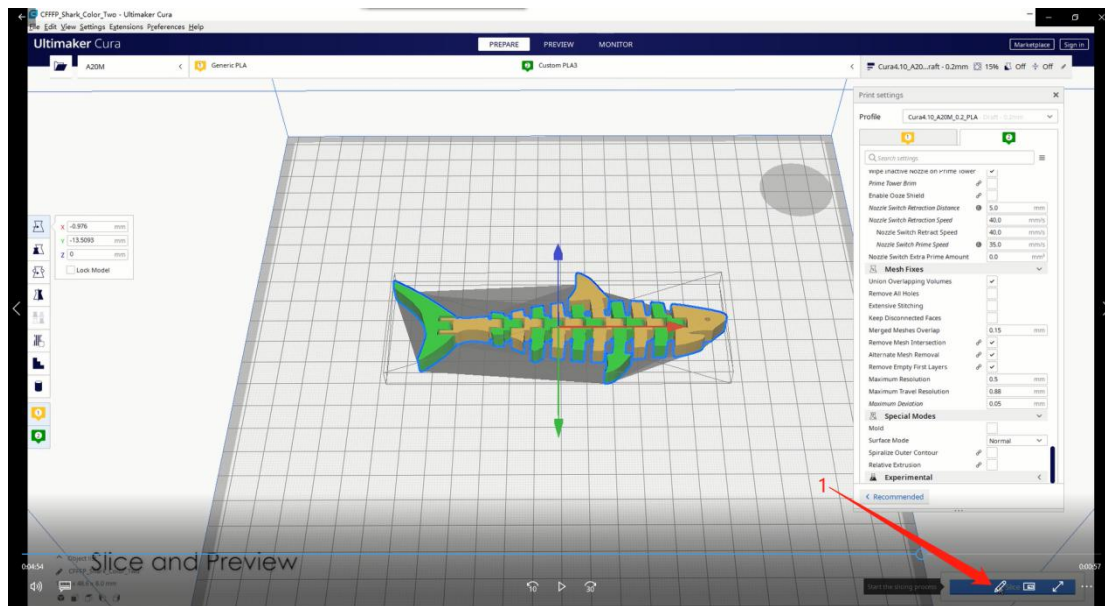
8. Assign different files to different extruders, the default is extruder 1, click on the model and then click on the corresponding extruder



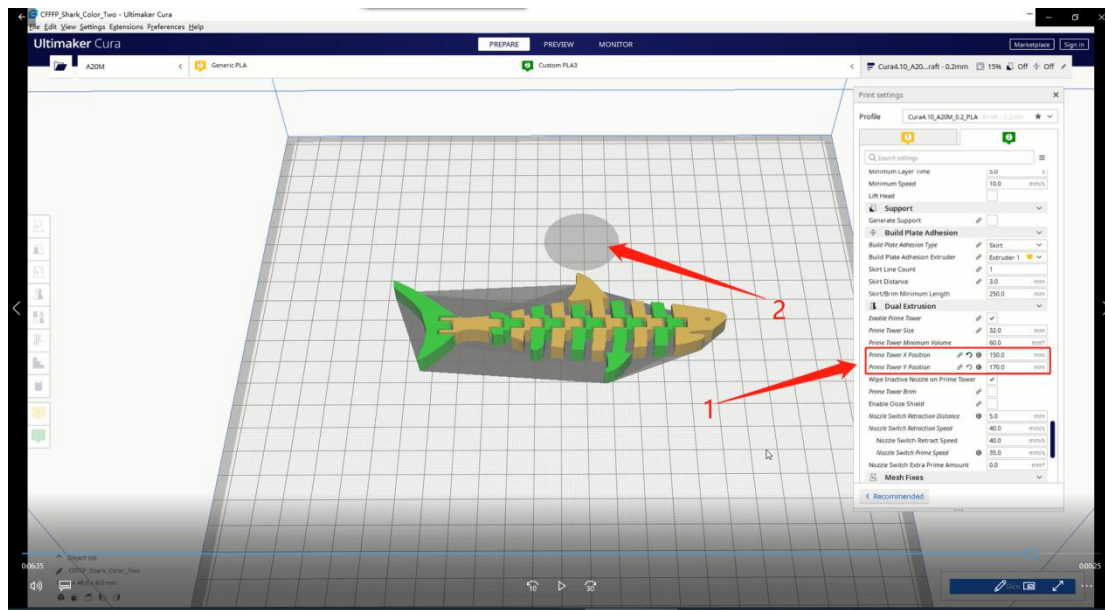
9. Right click to "Select All Models">"Merge Models"



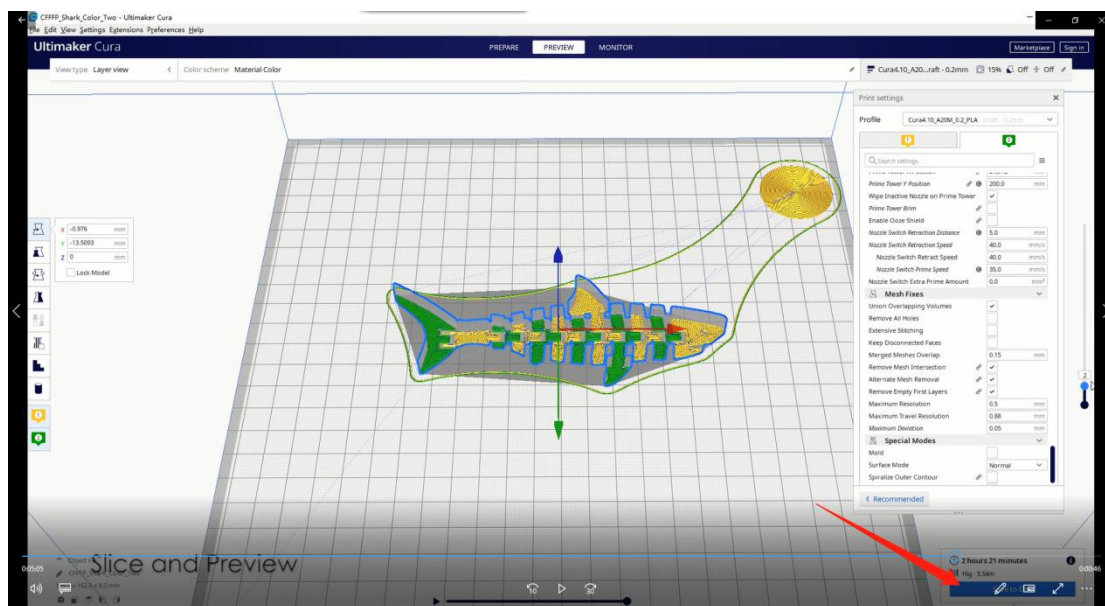
10. Slice and Preview



11. Tip: You can set the prime tower closer to save time



12. Make sure everything is fine, then slice again and save it.



If you still have problems using our 3D printer, you can contact us by email:

Rita technical@geeetech.com

HAPPY PRINTING!